



INDUSTRIAL HOSE PRODUCTS



GOODYEAR
RUBBER PRODUCTS, INC.

📞 727-342-5088

You can also email us at
GRP@goodyearrubberproducts.com



TABLE OF CONTENTS



- Hose Experts ■ 1
- Eco-10 ■ 2
- Eco-5 ■ 4
- Mil-Spec ■ 6
- Flame Out ■ 8
- Dura-Flow ■ 10
- Pro-Flow ■ 12
- Industrial LDH ■ 14
- Rack Hose ■ 16
- Reel Lite ■ Inside Back Cover
- Pencil Line ■ Back Cover
- Warranty Information ■ Back Cover

FOR ALL YOUR INDUSTRIAL HOSE NEEDS

With more than three decades of service, Key Hose is committed to being the industry leader in the design and manufacture of premier industrial hose products by combining our collective expertise with more manufacturing capacity than any other hose manufacturer in the world. Striving to become the "best hose company in the world", we've grown from our original 16 looms to reach triple-digit loom capacity with multiple facilities and expert manufacturing all proudly based in south east Alabama.

THE HOSE EXPERTS

Key Hose is the industry leader in the design and manufacture of woven jacketed and rubber covered industrial hose products. We have continually improved every process and product we offer to better meet ever changing industrial applications. Our unique weaving techniques for jacketed hose reduce friction loss 20% to 50% while our innovative yarn combinations result in jackets that are lighter and stronger. Industrial hose that is on time, on target and on budget...this is Key.

“We are dedicated to the manufacture and delivery of the highest quality hose products, combining the best in raw materials with

KEY-LOK TECHNOLOGY

Key-Lok, exclusively from Key Hose, is a polyurethane based polymer employing revolutionary nano-pigment technology. More than doubling the abrasion resistance of your hoseline compared to untreated hoselines, this proprietary formula also offers unprecedented color fastness to provide years of vibrant, visual hose identification. Key-Lok is non-toxic, environmentally safe and highly durable. Mechanically infused and heat-set to encapsulate, soak and protect each yarn while also bonding the fibers of the weave to the protective polymers of the formula. Finish off your jacketed hoselines with the best in added abrasion resistance and color longevity, This Is Key.

THIS IS KEY

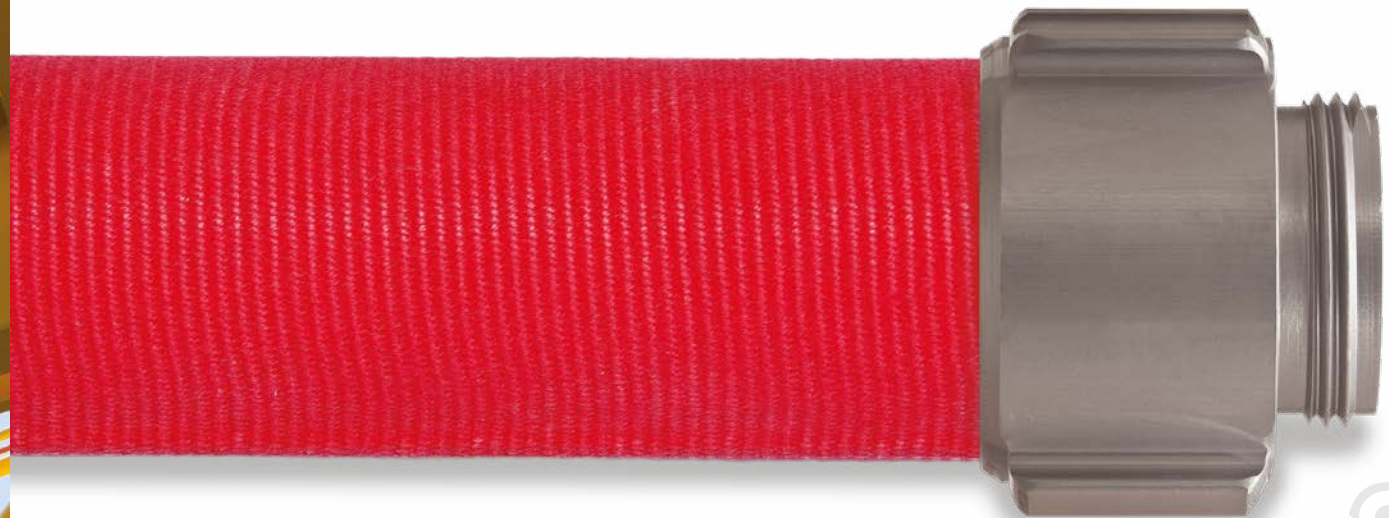
ECO-10

Lightweight, double jacket construction, combining 100% premium ring spun staple and filament polyester fibers over a thin wall, high tensile, EPDM rubber liner. The outer jacket is mildew resistant and available with double dip "Key-Lok" polyurethane based polymer impregnation for abrasion and moisture resistance. A proprietary reverse twill weave construction reduces friction loss, while engineered yarn selections lighten the hose up to 25% compared to competitive offerings.

LIGHTWEIGHT RUBBER LINED FIRE HOSE

This reliable, impregnated double jacket fire hose is tested to 600 and 800 psi, meets MIL-H-24606 latest edition for abrasion resistance and is UL Listed. Features a 10-year warranty and lifetime liner delamination guarantee. Eco-10 can be coupled with 6061-T6 aluminum threaded couplings or forged Storz. Brass, special threads or other custom features available upon request.

FOR SUPPLY AND ATTACK APPLICATIONS



Diameter	Part No.	Service Test	Proof Test	Burst Test	Bowl Size	Weight Uncoupled
1"	DP10-800	400 psi	800 psi	1200 psi	1 ³ / ₈ "	0.14 lbs/ft
**1 ¹ / ₂ "	DP15-800-ECO	400 psi	800 psi	1200 psi	1 ¹⁵ / ₁₆ "	0.23 lbs/ft
*1 ³ / ₄ "	DP17-800-ECO	400 psi	800 psi	1200 psi	2 ¹ / ₁₆ "	0.28 lbs/ft
*2"	DP20-800	400 psi	800 psi	1200 psi	2 ² / ₅ "	0.31 lbs/ft
**2 ¹ / ₂ "	DP25-800-ECO	400 psi	800 psi	1200 psi	3"	0.42 lbs/ft
*3"	DP30-800-ECO	400 psi	800 psi	1200 psi	3 ³ / ₈ "	0.56 lbs/ft
4"	DP40-600	300 psi	600 psi	900 psi	4 ¹ / ₂ "	0.82 lbs/ft
5"	DP50-600	300 psi	600 psi	900 psi	5 ¹ / ₂ "	1.14 lbs/ft

*UL Listed to 400 psi | **UL Listed to 400 psi and FM Approved



NFPA Colors Available

MADE IN USA



Eco-5

Lightweight, single jacket construction, combining 100% polyester ring spun staple and filament fibers over a thin wall, high tensile, EPDM rubber liner. The outer jacket is mildew resistant and available with double dip "Key-Lok" polyurethane based polymer impregnation for unmatched abrasion and moisture resistance. A proprietary reverse twill weave construction reduces friction loss, while high tensile yarn combinations allow hose to be 25% lighter. Hose features a 5-year warranty, is FM Approved, tested to 600 psi, and UL Listed*.

RUBBER LINED INDUSTRIAL HOSE

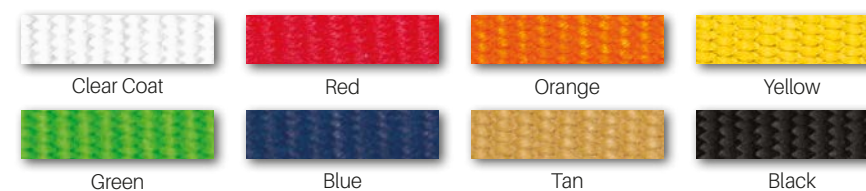
Eco-5 can be coupled with 6061-T6 aluminum threaded couplings or Storz. Brass, special threads or other custom features available upon request.

SINGLE JACKET INDUSTRIAL HOSE



Diameter	Part No.	Service Test	Proof Test	Burst Test	Bowl Size	Weight Uncoupled
1"	SP10-600	300 psi	600 psi	900 psi	1 ³ / ₁₆ "	0.10 lbs/ft
**1 ¹ / ₂ "	SP15-600	300 psi	600 psi	900 psi	1 ³ / ₄ "	0.15 lbs/ft
*2"	SP20-600	300 psi	600 psi	900 psi	2 ¹ / ₄ "	0.17 lbs/ft
**2 ¹ / ₂ "	SP25-600	300 psi	600 psi	900 psi	2 ³ / ₄ "	0.28 lbs/ft

*UL Listed to 250 psi | **UL Listed to 250 psi and FM Approved



NFPA Colors Available

MADE IN USA



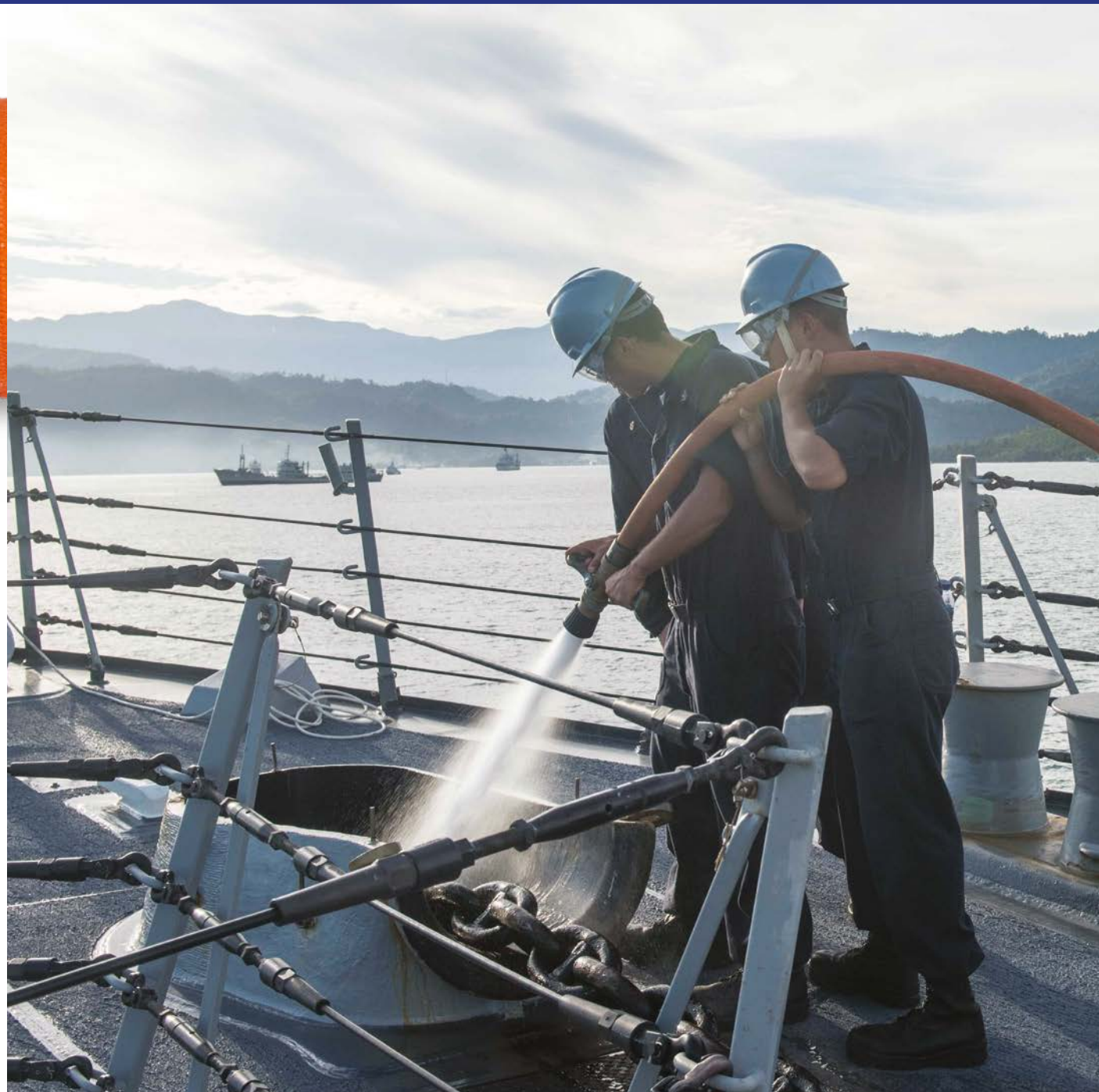
MIL-SPEC

Superior double jacket construction, combining 100% premium polyester ring spun staple and filament fibers over a heavy wall, ozone resistant, EPDM rubber liner or NSF-61 compliant polyurethane liner. The outer jacket is mildew resistant and treated with our special "Key-Lok" polyurethane based polymer impregnation for maximum abrasion and moisture resistance. Rugged, easy to handle and built to withstand every changing environment.

HEAVY DUTY RUBBER LINED HOSE

This dependable, double jacket hose is tested to 600 psi, meets MIL-H-24606 latest edition and is UL Listed*. Features a 10-year warranty and lifetime liner delamination guarantee. Unless otherwise specified, each length of hose shall be fitted with a set of cast or forged brass couplings. Couplings shall conform to TYPE A, Style 1 or WW-C-621 Federal Standards.

DOUBLE JACKET ATTACK HOSE



Diameter	Part No.	Service Test	Proof Test	Burst Test	Bowl Size	Weight Uncoupled
*1½"	DP15-600	300 psi	600 psi	900 psi	1 ¹⁵ / ₁₆ "	0.34 lbs/ft
1½"	DP15-600PU	300 psi	600 psi	900 psi	1 ¹⁵ / ₁₆ "	0.28 lbs/ft
*1¾"	DP17-600	300 psi	600 psi	900 psi	2 ¹ / ₈ "	0.38 lbs/ft
*2½"	DP25-600	300 psi	600 psi	900 psi	3"	0.54 lbs/ft
2½"	DP25-600PU	300 psi	600 psi	900 psi	3"	0.46 lbs/ft
*4"	DP40-600	300 psi	600 psi	900 psi	4½"	0.82 lbs/ft

*UL Listed



Orange



Blue

MADE IN USA



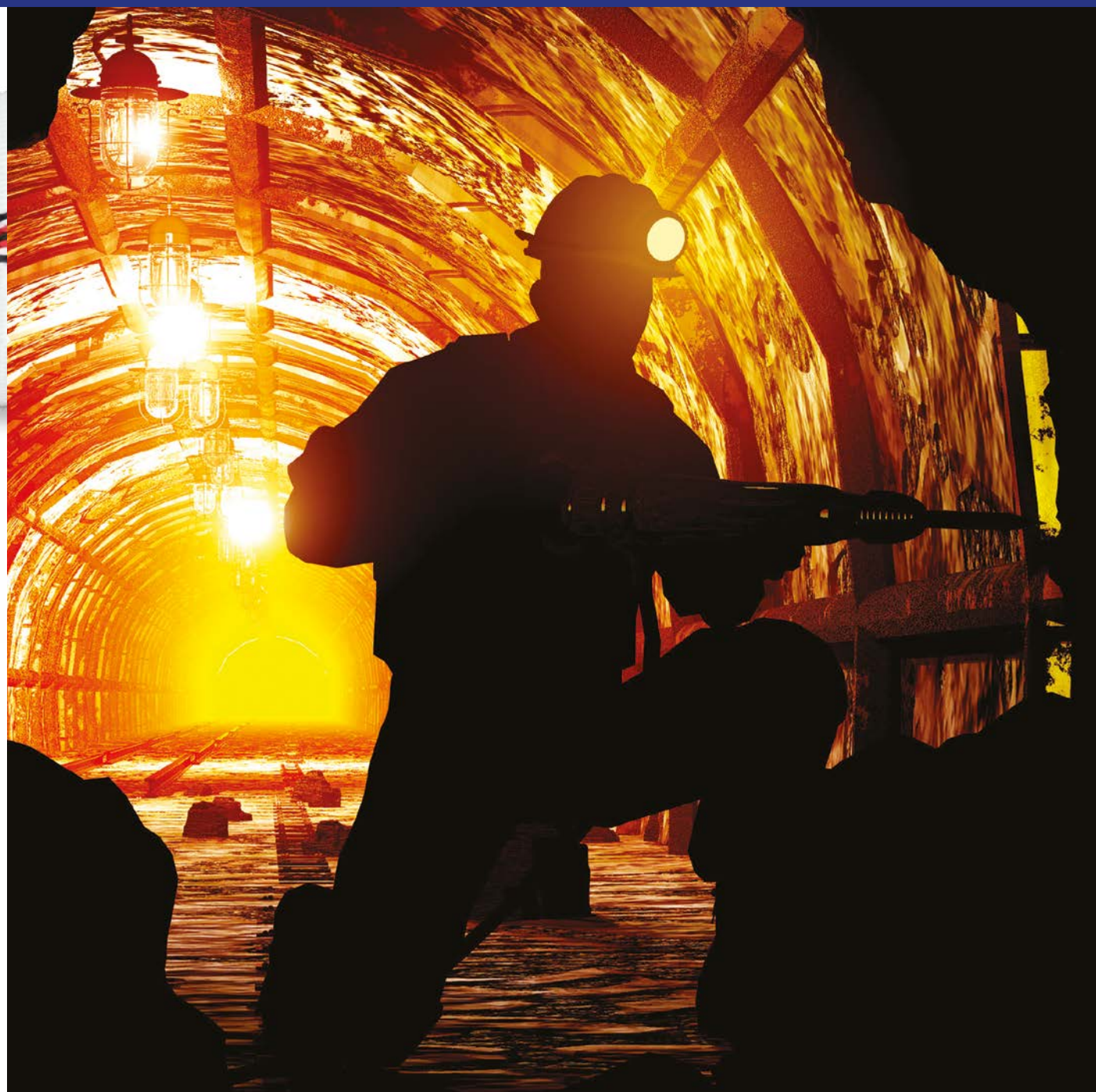
FLAME OUT

Mine Safety and Health Administration approved, this lightweight jacketed and rubber lined fire hose features self-extinguishing properties and is guaranteed to meet the demands of underground fire fighting. Extremely heat and cold resistant and available in single jacket or double jacket construction with high quality polyester reinforced outer jacket and durable MSHA Approved rubber liner.

MSHA APPROVED MINE HOSE

All polyester outer jackets provide superior cut, puncture and abrasion resistance while enhancing protection of a kink resistant rubber liner that guarantees reliable flow. Compact design easily stores on racks or reels. Couplings are internal expansion ring threaded or as required by purchaser.

SINGLE/DOUBLE JACKET MINE HOSE



Diameter	Part No.	Service Test	Proof Test	Burst Test	Bowl Size	Weight Uncoupled
1 1/2"	SP15-MSHA	300 psi	600 psi	900 psi	1 3/4"	0.23 lbs/ft
2"	SP20-MSHA	300 psi	600 psi	900 psi	2 1/4"	0.33 lbs/ft
2 1/2"	SP25-MSHA	300 psi	600 psi	900 psi	2 3/4"	0.39 lbs/ft
1 1/2"	DP15-MSHA	400 psi	800 psi	1200 psi	1 15/16"	0.38 lbs/ft
2"	DP20-MSHA	400 psi	800 psi	1200 psi	2 2/5"	0.46 lbs/ft
2 1/2"	DP25-MSHA	400 psi	800 psi	1200 psi	3"	0.64 lbs/ft



White

MADE IN USA



MSHA Approved and Certified Acceptance Number 18-FHA100001

DURA-FLOW

The lightweight, small diameter, rubber covered attack hose that packs a big punch. The heat and chemical resistant, nitrile/PVC through-the-weave design provides peak performance and maximum flow. With a test pressure of 600 psi, Dura-Flow clearly outperforms conventional rubber covered attack lines.

LIGHTWEIGHT, HIGH PERFORMANCE HOSE

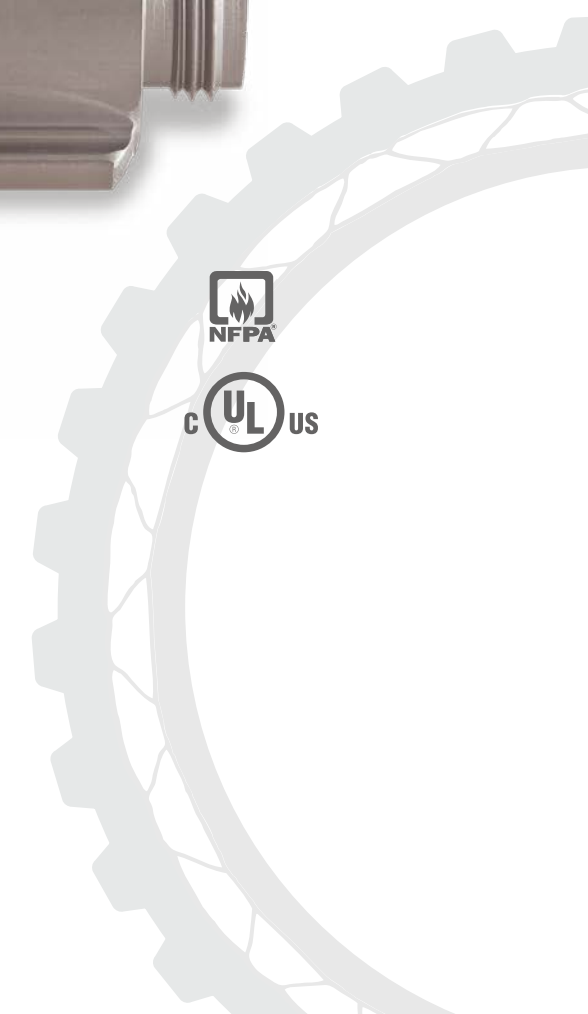
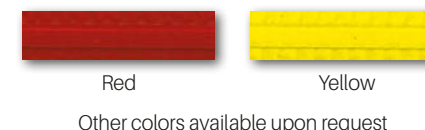
A rugged, thick ribbed outer jacket construction makes the hose highly resistant to kink, impact, punctures, cuts and abrasion. Ozone resistant, maintenance-free and no drying required, make Dura-Flow a reliable weapon in a firefighter's arsenal. NFPA compliant and UL Listed*. Dura-Flow coupling options are as required by purchaser, expansion ring threaded, Storz clamp ring, etc.

RUBBER COVERED ATTACK HOSE



Diameter	Part No.	Service Test	Proof Test	Burst Test	Bowl Size	Weight Uncoupled
1"	RC10-600	300 psi	600 psi	900 psi	1 ³ / ₁₆ "	0.15 lbs/ft
1 ¹ / ₂ "	RC15-600	300 psi	600 psi	900 psi	1 ¹³ / ₁₆ "	0.24 lbs/ft
1 ³ / ₄ "	RC17-600	300 psi	600 psi	900 psi	1 ¹⁵ / ₁₆ "	0.28 lbs/ft
2"	RC20-600	300 psi	600 psi	900 psi	2 ¹ / ₄ "	0.32 lbs/ft
2 ¹ / ₂ "	RC25-600	300 psi	600 psi	900 psi	2 ¹³ / ₁₆ "	0.48 lbs/ft

*UL Listed to 250 psi



PRO-FLOW

A lightweight, heat resistant, rubber covered hose that delivers superior flow every time, everywhere. Ozone and chemical resistant, the nitrile/PVC through-the-weave design allows the hose to expand under pressure — decreasing friction loss and increasing water flow. The ribbed rubber outer cover offers increased resistance to impact,

HEAVY DUTY RUBBER COVERED HOSE

punctures and abrasion. Reliable, maintenance-free and requires no drying, makes this the ideal hose for dewatering, industrial fire fighting, large diameter supply hose and wash down on construction sites. NFPA compliant and UL Listed*. Pro-Flow coupling options are as required by purchaser, expansion ring threaded, Storz clamp ring, etc.

RUBBER COVERED INDUSTRIAL HOSE



Diameter	Part No.	Service Test	Proof Test	Burst Test	Bowl Size	Weight Uncoupled
*1½"	RC15-500	250 psi	500 psi	750 psi	1 ¹³ / ₁₆ "	0.22 lbs/ft
1¾"	RC17-500	250 psi	500 psi	750 psi	1 ¹⁵ / ₁₆ "	0.25 lbs/ft
*2"	RC20-500	250 psi	500 psi	750 psi	2¼"	0.30 lbs/ft
*2½"	RC25-500	250 psi	500 psi	750 psi	2 ¹³ / ₁₆ "	0.40 lbs/ft
**3"	RC30-600	300 psi	600 psi	900 psi	3 ³ / ₈ "	0.60 lbs/ft
***4"	RC40-500	250 psi	500 psi	750 psi	4¼"	0.74 lbs/ft
***5"	RC50-450	225 psi	450 psi	675 psi	5¼"	0.93 lbs/ft
6"	RC60-450	225 psi	450 psi	675 psi	6¼"	1.35 lbs/ft

*UL Listed to 250 psi | **UL Listed to 300 psi | ***UL Listed to 200 psi



Red



Yellow

Other colors available upon request



INDUSTRIAL LDH

The workhorse of industrial hoses, featuring a rugged and reliable construction that has it all — heat/cold, chemical and ozone resistant. The nitrile/PVC through-the-weave design with smooth, reinforced inner liner that allows the hose to expand under pressure — increasing water flow and keeping friction loss to a minimum. The ribbed nitrile rubber cover lowers drag force and increases resistance to abrasion, oil, fuel and a wide range

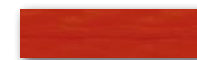
LARGE DIAMETER LAY FLAT HOSE

of chemicals. Industrial LDH features an oversized inner diameter that is engineered to fit most couplings. Easy to deploy and easy to store, available in continuous lengths of up to 300'. As required by purchaser. Hose designed for Pierce, Bauer, USC Hi-Flow, Victaulic field replaceable or crimped couplings.

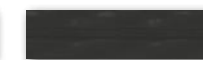
LAY FLAT SUPPLY HOSE



Diameter	Part No.	Service Test	Proof Test	Burst Test	Weight Uncoupled
4"	RC40-500	250 psi	500 psi	750 psi	0.74 lbs/ft
6"	RC60-300	150 psi	300 psi	450 psi	1.20 lbs/ft
8"	RC80-300	150 psi	300 psi	450 psi	1.95 lbs/ft
10"	RC100-300	150 psi	300 psi	450 psi	2.95 lbs/ft



Red



Black

Other colors available upon request



RACK HOSE

RACK AND REEL FIRE HOSE

All synthetic polyester and fully polyurethane lined, single jacket fire hose specifically designed for occupant use on interior fire fighting applications. Ideally suited for interior rack or reel service in office buildings, hospitals and manufacturing facilities. FM approved and manufactured in accordance with NFPA Standard 1961 latest edition. Hose is available pre-folded for ease of installation in standard pin racks and is available in lengths of 50', 75' and 100'. Choice of brass or aluminum couplings.

SINGLE JACKET CABINET HOSE



Diameter	Part No.	Service Test	Proof Test	Burst Test	Bowl Size	Weight Uncoupled
1 1/2"	RR15-500	250 psi	500 psi	750 psi	1 11/16"	0.12 lbs/ft

FM Approved



White

MADE IN USA



REEL LITE

LIGHTWEIGHT BOOSTER HOSE

The industry's most durable and lightweight, high pressure booster hose featuring a rugged, abrasion and heat resistant single jacket polyester cover. Uniquely constructed using an interior helical reinforcement offering unmatched kink resistance that maintains hose shape and performance. Designed for use with 12" and larger drum reels and skid units. Available in lengths up to 200'.

SEMI-RIGID ATTACK HOSE

Diameter	Part No.	Service Test	Proof Test	Burst Test	Bowl Size	Weight 50' Coupled
1"	RB10-800	400 psi	800 psi	1200 psi	1 5/16"	10 lbs



Red



Yellow

MADE IN USA



106' PENCIL HOSE

SINGLE JACKET USFS SPEC HOSE

Lightweight, circular woven fire hose technology incorporating high tensile, all polyester woven jacket and lined with high tensile NSF polyurethane. This 5/8" and 3/4" diameter hose features an 8" coil diameter and brass GHT threaded couplings with strain reliefs. Constructed to meet or exceed U.S. government federal specification 4210-01-167-1061 and ideally suited for rigorous forestry applications including pumper protection, mop-up and clean-up operations.

LIGHTWEIGHT MOP-UP FORESTRY HOSE

Diameter	Part No.	Weight 50' Coupled
5/8"	FF058-300	1.3 lbs
3/4"	FF075-600	1.5 lbs



Clear Coat



Red



Orange



Yellow



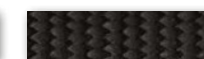
Green



Blue



Tan



Black

MADE IN USA

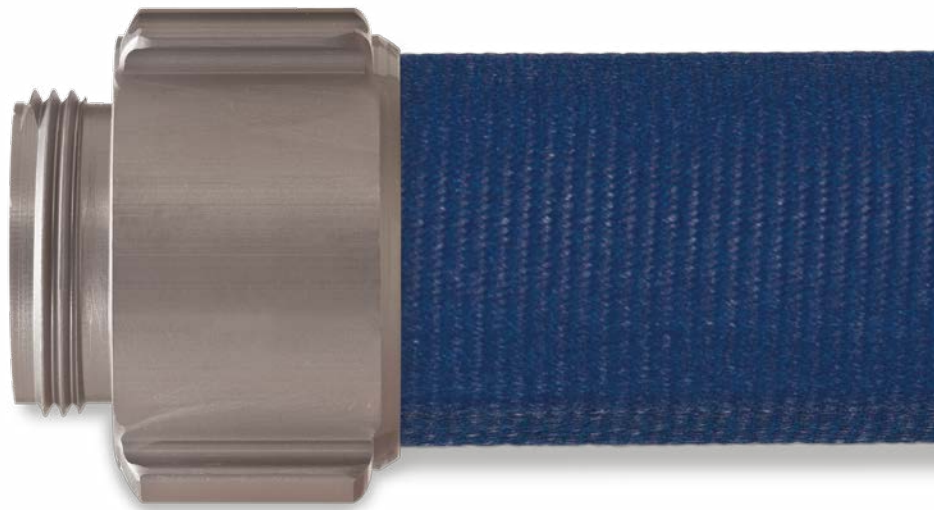


keyhose.com

800.447.5666 | Fax: 800.447.5664

P.O. Box 7107, Dothan, Alabama 36302

Distributed by:



WARRANTY

At Key, all hose products are subjected to the most stringent quality control standards in the industry. Our world-class manufacturing facilities combine innovative technology and equipment to ensure a consistent level of superior quality and timely delivery. Key hose products have a guaranteed service life ranging from one year to ten years. Refer to individual product specifications for exact warranty information.

Key Hose reserves the right to modify any specification without prior notice to meet or exceed changing standards. For more information please contact a Key Hose authorized distributor.

04/21

GOODYEAR
RUBBER PRODUCTS, INC.

 **727-342-5088**

You can also email us at
GRP@goodyearrubberproducts.com